

# Great Britain

The postal rates at the time of the 1935 Silver Jubilee derived from U.P.U. tables.

<b>½d</b>	<p>Printed papers, inland, per 2 oz up to 2 lb                  Braille items for the blind, up to 2 lb                  (Letter, inland, per subsequent 2 oz surface or 1 oz airmail)                  (Printed papers, abroad, per 2 oz, minimum rate: 1d, maximum: foreign 4 lb, empire 5 lb)                  (Commercial papers, abroad, per subsequent 2 oz, maximum: foreign 4 lb, empire 5 lb)                  (Samples, anywhere, per subsequent 2 oz, maximum: inland 8 oz, abroad 1 lb)                  (Newspapers, inland, per subsequent 6 oz up to 2 lb)                  (Magazines, special Canada rate, per ½ lb over 1½ lb, maximum: 5 lb)                  (Certificate of posting, inland)                  (Printed papers late fee, inland)</p>
<b>1d</b>	<p>Postcard, inland [surface or air], list A [surface]                  Newspaper, inland, not exceeding 6 oz                  Samples, anywhere, 1<sup>st</sup> 4 oz                  Printed paper, foreign, minimum rate                  Magazines, special Canada rate, 1<sup>st</sup> 6 oz                  Braille items for the blind, 2 to 5 lb                  (Letter, list A, per subsequent oz)                  (Small packet, abroad, per 2 oz above 1<sup>st</sup> 10 oz, maximum: 2 lb)                  (Compensation fee, inland non-registered items, per subsequent £20 cover, maximum: £400)</p>
<b>1½d</b>	<p>Letter, inland [surface or air], up to 2 oz                  Letter, list A, 1<sup>st</sup> oz                  Postcard, foreign                  Braille items for the blind, 5 to 8 lb                  Magazines, special Canada rate, 6 oz to 1½ lb                  (Letter, foreign including Iraq &amp; Transjordan, per subsequent oz)</p>
<b>2d</b>	<p>Airmail postcard, Egypt, Palestine, Syria, Transjordan, Sudan, Iraq, Persia                  Airmail [Rimouski to Montreal] letter per ½ oz or postcard, Canada, Newfoundland                  Braille items for the blind, 8 to 11 lb                  (Postcard, Belgian Congo internal airmail supplement)                  (Insurance fee, abroad, per subsequent £12 cover, maximum: £400)</p>
<b>2½d</b>	<p>Letter, foreign including Iraq &amp; Transjordan, 1<sup>st</sup> oz                  Airmail postcard, Europe                  Commercial papers, abroad, 1<sup>st</sup> 10 oz</p>
<b>3d</b>	<p>Airmail letter, Egypt, Palestine, Syria, Transjordan, Sudan, Iraq, Persia, per ½ oz                  Airmail postcard, Bahamas, Burma, Gold Coast, Nigeria, list B                  (Letter, Belgian Congo internal airmail supplement, per ½ oz)                  (Airmail letter, Europe including Turkey &amp; European Russia, per subsequent oz)                  (Registration fee)                  (Advice of receipt fee, [applied to AR form])                  (Compensation fee, inland non-registered items, up to £5 cover)</p>
<b>4d</b>	<p>Airmail letter, Europe including Turkey &amp; European Russia, 1<sup>st</sup> oz                  Airmail postcard, Belgian Congo via Imperial Airways, Jamaica                  (Compensation fee, inland, £5 to £20 cover)</p>
<b>5d</b>	<p>Airmail letter, Bahamas, Libya, USA, per ½ oz                  Airmail postcard, Gambia, list C                  Small packet, abroad, 1<sup>st</sup> 10 oz                  (Insurance fee, abroad, 1<sup>st</sup> £12 cover)</p>

<b>6d</b>	Airmail letter, Gold Coast, Nigeria, Nyasaland, Burma, list B, per ½ oz Airmail postcard, Dutch E Indies, USSR, list D Parcel, inland, up to 2 lb till July, up to 3 lb from July (Express rate)
<b>7d</b>	Airmail postcard, Columbia, list E, & via France: Fr Equatorial Africa, Fr Guiana, B Congo Parcel, inland, 3 to 4 lb from July
<b>8d</b>	Airmail letter, Belgian Congo via Imperial Airways, Jamaica, per ½ oz Airmail postcard, French Indo China Parcel, inland, 4 to 5 lb from July
<b>9d</b>	Airmail letter, Gambia, Sierra Leone, per ½ oz Airmail postcard, Liberia, Madagascar Parcel, inland, 2 to 5 lb till July Parcel, inland, 5 to 6 lb from July
<b>10d</b>	Airmail letter, Brazil, Ivory Coast, Mexico, Senegal, Portuguese E Africa , per ½ oz Airmail postcard, Br Fr or Du Guiana, Venezuela &, via New York, Ecuador Parcel, inland, 6 to 7 lb from July
<b>11d</b>	Airmail letter, Chile, Philippines, Siam , per ½ oz Parcel, inland, 7 to 8 lb from July
<b>1/-</b>	Airmail letter, Ecuador, Argentina, Bolivia, Chile, Paraguay, Peru, Uruguay, Dutch E Indies, USSR , per ½ oz Airmail [from New York] postcard, Colombia, Bolivia, Peru Parcel, inland, 5 to 8 lb till July Parcel, inland, 8 to 15 lb from July
<b>1/3</b>	Airmail letter, lists D & E, Columbia & via France: Fr Equatorial Africa, Fr Guinea, B Congo, per ½ oz Parcel, inland, 8 to 11 lb till July
<b>1/4</b>	Airmail letter, French Indo China , per ½ oz Airmail [from New York] postcard, Brazil, Chile Airmail parcel [non-express], France, up to 1 lb
<b>1/6</b>	Airmail parcel [express], France, up to 1 lb
<b>1/9</b>	Airmail letter, Br Fr or Du Guiana, Venezuela &, via New York, Ecuador, per ½ oz Airmail postcard, Brazil via France or Germany
<b>2/-</b>	Airmail letter, Liberia, Madagascar, & via New York, Columbia, per ½ oz Airmail postcard via France or Germany, Argentina, Bolivia, Chile, Ecuador, Paraguay, Peru, Uruguay Airmail parcel, Belgium, up to 1 lb
<b>2/3</b>	Airmail letter via New York, Bolivia, Peru, per ½ oz Parcel, Sudan, Egypt, per ½ lb
<b>2/9</b>	Airmail letter via New York, Brazil, Chile, per ½ oz
<b>3/-</b>	Parcel, K.U.T., per ½ lb
<b>3/6</b>	Airmail letter via France or Germany, Brazil, per ½ oz Parcel, S. Africa, N. & S. Rhodesia, per ½ lb
<b>4/-</b>	Airmail letter via France or Germany, Argentina, Bolivia, Chile, Ecuador, Paraguay, Peru, Uruguay, per ½ oz

### Annotation & Notes

List A = British Empire (not Transjordan), HM Ships abroad, British Post Offices in Morocco, Egypt, USA

List B = Algeria, Bahrein, Brunei, Ceylon, Cuba, Hong Kong, India, K.U.T., Libya, Mauritius, Morocco, North Borneo, N & S Rhodesia, Sarawak, S. Africa, Straits Settlements, Tunisia, U.S.A., Zanzibar.

List C = China, Ivory Coast, Mexico, Philippines, Portuguese E. Africa, Senegal, Siam, Sierra Leone

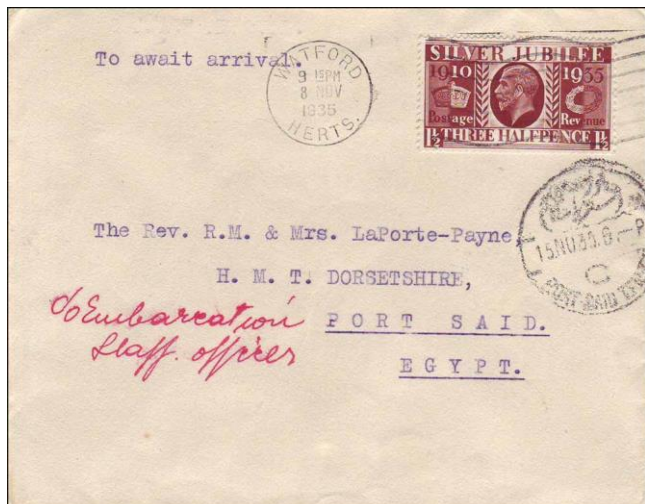
List D = Australia, Fiji, New Caledonia, New Guinea, New Zealand, Papua, Solomon Islands

List E = Br Honduras, Costa Rica, Dominican Rep., El Salvador, Guatemala, Haiti, Honduras, Leeward Is, Nicaragua, Panama, Puerto Rico, Trinidad, Windward Is.

(...) = Additions to standard rates.

Shading

	Silver Jubilee denominations
	Rates achievable solely with Silver Jubilee denominations
	Rate achievable with complete Silver Jubilee sets x2, x6



*This cover would seem to qualify for the list A 1½d rate on two grounds: it is going to Egypt and secondly that it is addressed to one of HM ships abroad, viz. the troopship HMT Dorsetshire. Dated Watford 8 Nov 1935 and Port Said 15 No, the cover is marked "To await arrival".*

AJA – August 2015